

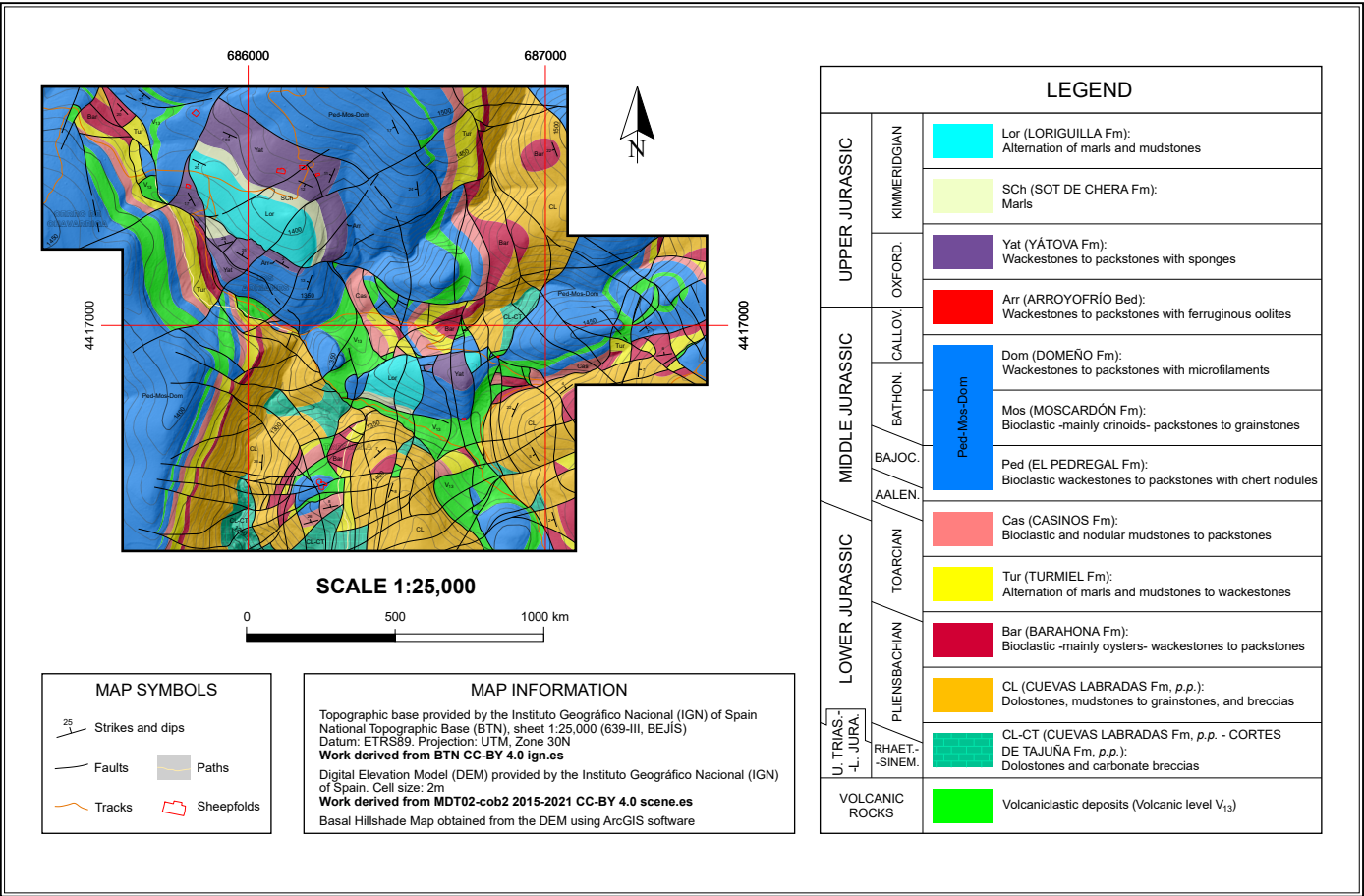


GEOLOGICAL MAP OF THE **ABEJUELA** OUTCROP (SE IBERIAN RANGE, SPAIN)

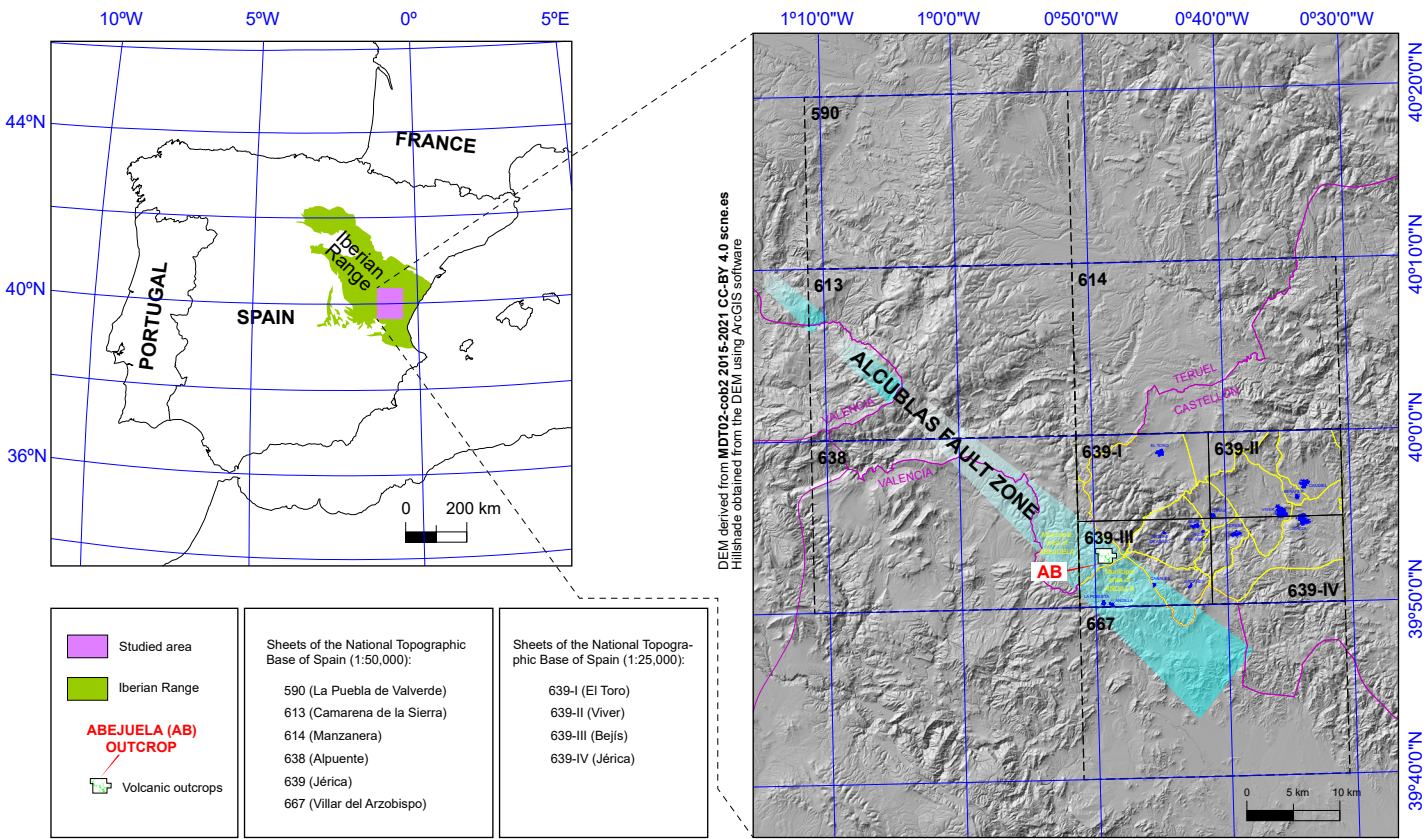
J. EMILIO CORT S  
Departamento de Geodin mica, Estratigraf a y Paleontolog a, Facultad de Ciencias Geol gicas, Universidad Complutense de Madrid  
jocortes@ucm.es



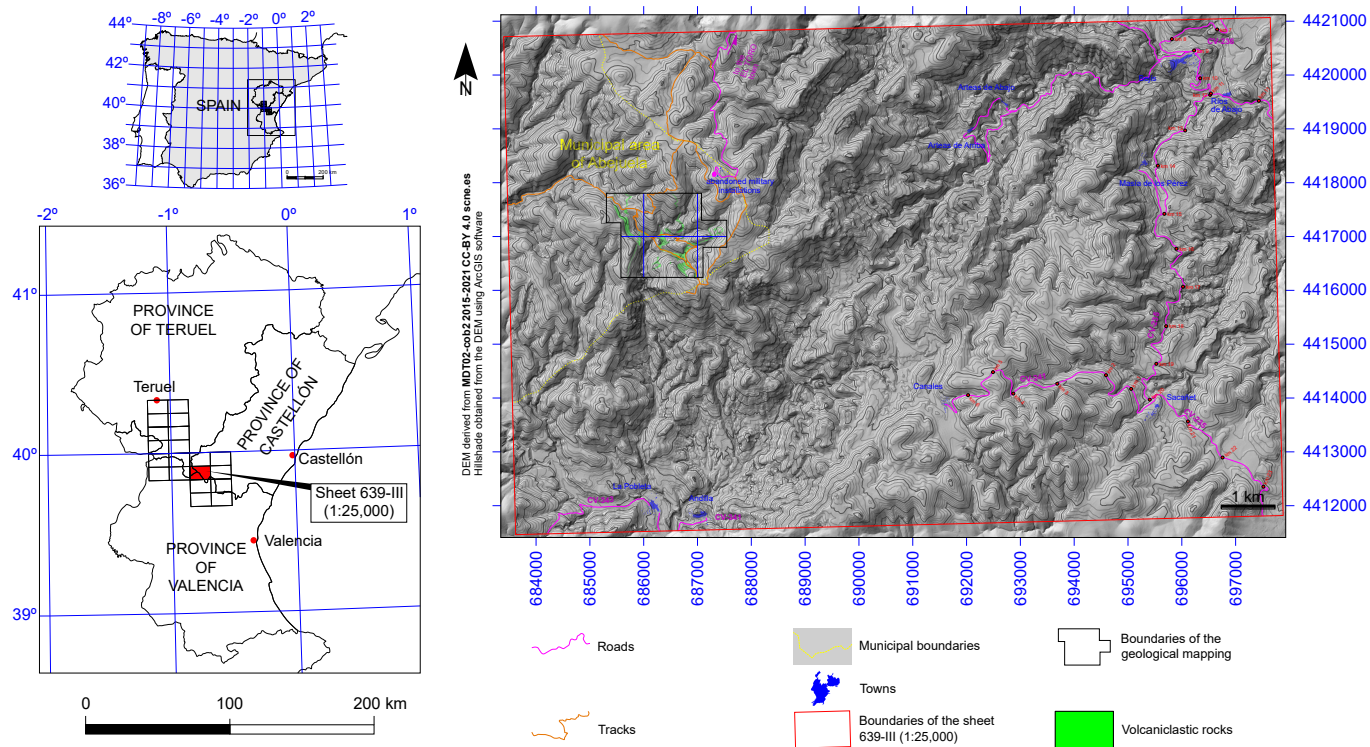
1) 2D GEOLOGICAL MAP



2) REGIONAL LOCATION OF THE GEOLOGICAL MAP



3) LOCATION OF THE GEOLOGICAL MAP IN THE SHEET 639-III (1:25,000)



4) 3D GEOLOGICAL MAP (EASTERN AND CENTRAL PART OF THE ABEJUELA OUTCROP) WITH GOOGLE EARTH

